



MODULATOR SERIES ELECTRONIC SIREN

- **High intensity warning features multiple signal tones and voice broadcasting**
- **100% electronic; no moving parts**
- **360° coverage output can be heard up to to 4500 ft. away**
- **Operates on batteries**



DESCRIPTION

The Modulator Siren Series is capable of producing high intensity warning signals over a large area. The speaker array consists of modules that utilize four 100 watt drivers, which allows for easy servicing. The Modulator provides a flat frequency response for excellent voice reproduction as well as warning signals such as wail, steady, hi-lo, even a Westminster Chime. In addition to live broadcasting capabilities, a Digital Voice option can be added to produce a clear pre-recorded voice message. An excellent alert and notification device, the Modulator Siren is ideal for locations where people congregate outdoors, or in industrial settings where immediate instruction is necessary.

The Modulator siren can be easily mounted on a standard utility pole. Control of the siren is handled by a custom-paired controller.

FEATURES

The Modulator Series Siren can be built according to volume requirements with a range of 1,200 to 4,500 feet at 70dBC @ 100 ft. or louder. It utilizes an input voltage of only 120VAC, eliminating the need for expensive three-phase electric service at the siren location, and it can operate a minimum of 15 minutes at full siren output from its batteries in the event of a power failure, and many hours of operation in standby mode. Where required, 2-way control can be added to this siren to allow reporting capabilities for applications that require it. Siren controllers can be configured for local or remote activation, including wireless (radio) control. All of our outdoor warning equipment is easily installed by any licensed electrician.



AUDIOTECH DIGITAL SIGNAL CORPORATION

PO Box 427 / 59 First St. • Wurtsboro, New York 12790
TEL: (845) 888-8000 FAX: (845) 888-0146 www.adsig.com

(800) 99-SIREN

MODULATOR SIREN SPECIFICATIONS

MODEL COMPARISON CHART

Model	# of Modules ‡	Watts	dBC @100' *	Effective Range (@ 70 dBC)	Height (inches)	Net Weight (pounds)**
MOD1004	1	400	106	1200'	43.17	181
MOD2008	2	800	112	1800'	63.70	296
MOD3012	3	1200	115	2200'	84.30	411
MOD4016	4	1600	118	2800'	105.0	526
MOD5020	5	2000	120	3100'	125.5	641
MOD6024	6	2400	121	3400'	146.08	760
MOD6048	6	4800	125	4500'	146.08	928

‡ The bottom module contains no active devices and is simply a reflective surface.

* Based on far field measurements.

** Shipping weight is greater.

Color: Off White

Frequency Response: 200-2000 Hz

Horn Type: Hyperbolic Flare

Horizontal Coverage: 360° ± 1dB

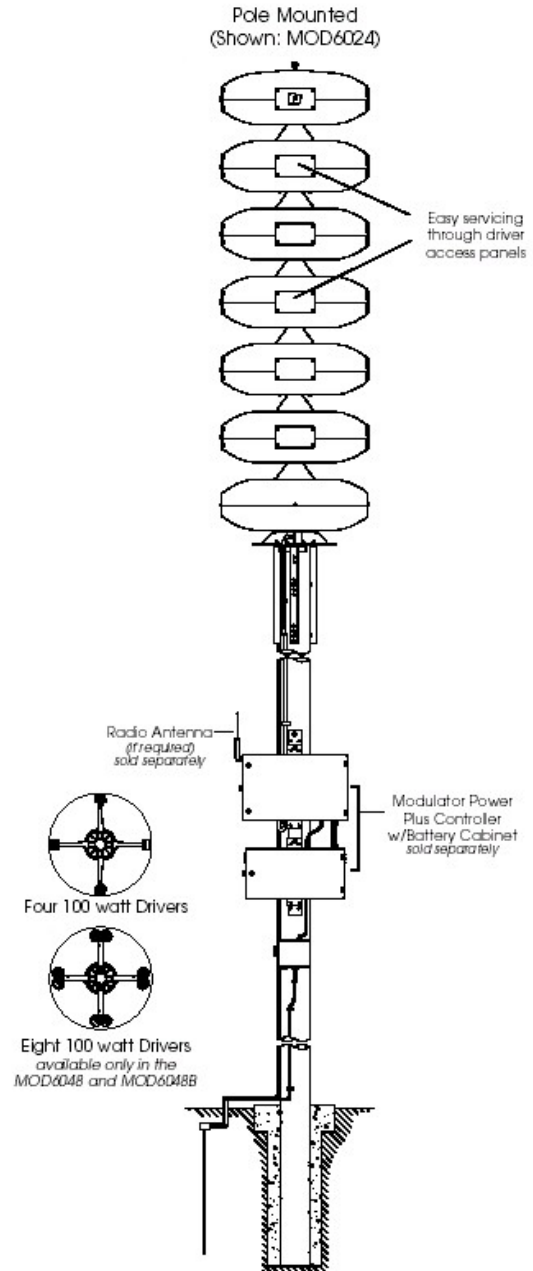
Diameter: 44½"

Recommended Mounting Height: 35' - 40' (9-11 m)

SIGNALS AVAILABLE*

Wail, Pulsed Wail, Steady, Pulsed Steady, Alternate Steady
Westminster Chime, Digital Voice, PA Option, & Custom

* Signals available when used with the Ultravoice™
Controller, purchased separately.



AUDIOTECH DIGITAL SIGNAL CORPORATION

PO Box 427 / 59 First St. • Wurtsboro, New York 12790

TEL: (845) 888-8000 FAX: (845) 888-0146 www.adsig.com

(800) 99-SIREN